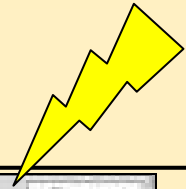
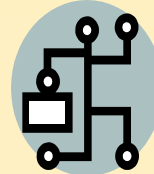
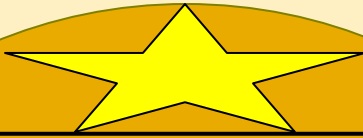
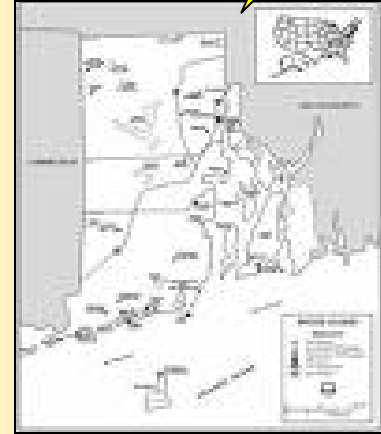


Rhode island is symbolized by a ships anchor.

Home



Roger Williams was the official founder of the Rhode Island colony. Roger Williams was actually banned from his Massachusetts town. He settled in Rhode island, and the first official Rhode island settlement was in 1636. He was helped in many ways by the native tribes. Roger Williams was banned from Massachusetts because of his religious ideas. He believed that natives should be able to participate the colony's religion. He also thought that religion should not be associated with the government, which was brought up often. He also thought they should allow religion differences. Here is a good website



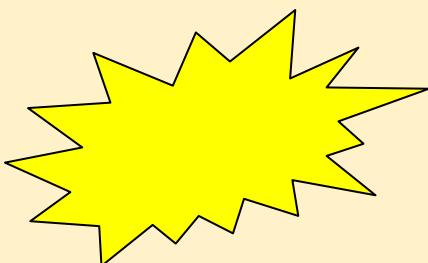
[Roger Williams Video](#)

[http://en.wikipedia.org/wiki/Rhode\\_Island](http://en.wikipedia.org/wiki/Rhode_Island)

### William Blackstone

William Blackstone was actually the first Rhode island settler. He is not considered the founder of Rhode island because of two main reasons. First of all the land that he claimed Rhode island was actually part of Massachusetts. Secondly he did nothing to help build the colony.

The geography of Rhode island is relatively flat. Eastern Rhode island is the low lands, while western Rhode island is the up lands. There are over 30 islands. It is the smallest state, to the north and east is Mass. To the west is Connecticut, and to the south is the Atlantic Ocean. There are not many mountains. The climate includes warm, hot , humid, rainy summers. They usually get snowy winters.





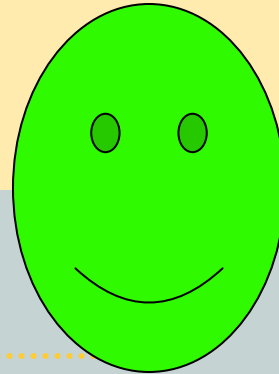
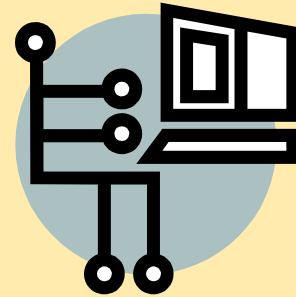
## Rhode Island (continued)

### CULTURAL/SOCIAL CHARACTERISTICS

Women in society was centered around household chores. The roles of women were similar to slaves. They would take care of the children like feeding them, nurturing them. They would make candles. This was a dangerous job involving hot wax, fire, and hot pans. They also cleaned chimneys which they would have to clean from the top of the chimney. They would have to clean the house daily, which included sweeping, cleaning the fireplace, and many other chores. They cooked breakfast, lunch, and dinner. They split wood, and many others.

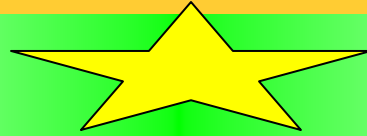


fire



The roles of natives in the history of Rhode island included many. In general the natives introduced corn to the colonist, and many other fruits and vegetables. For Rhode island they helped Roger Williams by helping him get to this free place. They also helped him with survival needs. They also influenced some of his ideas relating natives and religion.

Europeans have had a major effect on Rhode island's history and the all of the colonies. A little bit after the Europeans went to America, they started taking some of the natives land. This started King Phillip's war. King Charles granted basic rights. Then war came to the New England Colonies. The chief, Massasoit and other natives against the colonies.

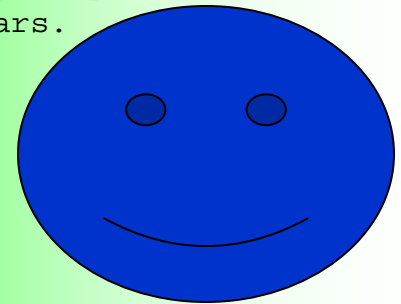


## Rhode island (continued)

### Home life


Rhode island Home life was like a the other colonies. The main agriculture of Rhode island was dairy farming, fishing, lumber, and shipbuilding. Dairy farms would have a lot of cows because we get our dairy from cows. They would of probably had something similar to a butter churn. They would of also had basic domestic tools for the cows. Fishing would be like your regular fisherman. The tools they would have used would include nets, fishing poles, string, hooks, bait, and many others. People that worked with lumber would probably sell chopped up trees that they cut down. Some tools would include saws, root cutter, maybe a log holder. Ship building was a job were people would build ships. The tools includes many some are nails, wood, saws, hammers, basic tools, knives maybe paint, and many others.

Rhode island schooling and education was mostly the same as New England in general. The boys were pushed into reading and writing. For this would take care of legal matters. In general school started at the age 7 and ended when they turned 13. They went 5 days a week, 8 hours a day, and 90 days a year. For 6 years.

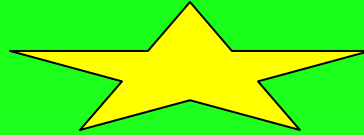
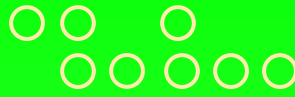
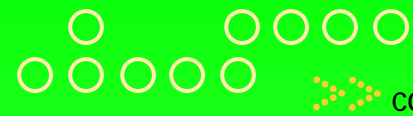


This is a primary map of the colony

One very important trade would be the triangular trade. This trade was the slave trading, by distilling rum to sell in Africa, then trading slaves and sugar with the Caribbeans. Some professions include smiths where they work with metal, and the work varies. A bottler would make bottles. And a Taylor sews cloth.



This is a primary map of the colony



## Work Cited

"Rhode Island." Wikipedia. 3/May/2008. Wikipedia foundation Inc.. 1/May/2008 <[http://en.wikipedia.org/wiki/Rhode\\_Island](http://en.wikipedia.org/wiki/Rhode_Island)>.

"Colony of Rhode Island and Providence Plantations." Wikipedia. 21/Feb./2008. Wikipedia foundation, Inc.. 12/Mar./2008<[http://en.wikipedia.org/wiki/Rhode\\_Island\\_Colony](http://en.wikipedia.org/wiki/Rhode_Island_Colony)>.

"13 Originals." TimePage. 20/Aug./2007 . The TimePage. 20/Apr./2008 <[www.timepage.org/spl/13colony.html](http://www.timepage.org/spl/13colony.html)>.

